

vertisol

IMAGINE BO FR



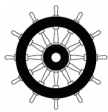
BLACKOUT



COLD-CUT, CRUSH-CUT OR
ULTRASONIC



FLAME RETARDANT



IMO CERTIFIED



MANUFACTURED IN THE EU



FINISH WITH SANITIZED®

Certified for
HP Latex Inks

PRINTABLE HP LATEX INKS



INDOOR AIR QUALITY
CERTIFIED

PERFORMANCE GUIDE

Imagine BO FR is the ideal window covering solution for any application which requires **100% opaque** roller blinds combined with flame retardancy and antibacterial properties.

The reverse side is white in order to **optimize solar energy reflection** and prevent buildings from overheating, helping considerably in saving costs when cooling a building in summer.

Imagine BO FR is **light-weight** and **flexible**, ideal for use in roll-up blinds when small shade diameters are required, and cassette systems.

Imagine BO FR is flame retardant, Sanitized® finished and holds the Oekotex label, **making it ideal for the most demanding environments** like hospitals, care homes, nurseries or schools.

Maximum recommended size Roller Blinds 260 cm x 260 cm

Imagine BO FR could present little waves in the cut-table or in the blinds. That is a peculiarity of the fabric.



TECHNICAL PROPERTIES		
Fabric Characteristic	Standard	
Composition of raw fabric	-	100 % PES
Weight (g/ m²)		346 ± 12 %
Thickness (mm)		0.40 ± 10 %
Fire classification	DIN 4102-1 NPFA 701 EN 13501-1 EN 13773 UNI 9177	B1 Pass Bs2d0 Class 1 Classe 1
Wheelmark	IMO Resolution MSC.307(88)-(2010 FTP Code)and IMO MSC/Circ. 1102	Pass
Light fastness Coating side	ISO 105 B02:2002 (blue scale level)	6 Snow 4
Roll size		Width 290/265 cm, Length 25m
Antibacterial	ASTM E 2180-18	Percent reduction=99,99%

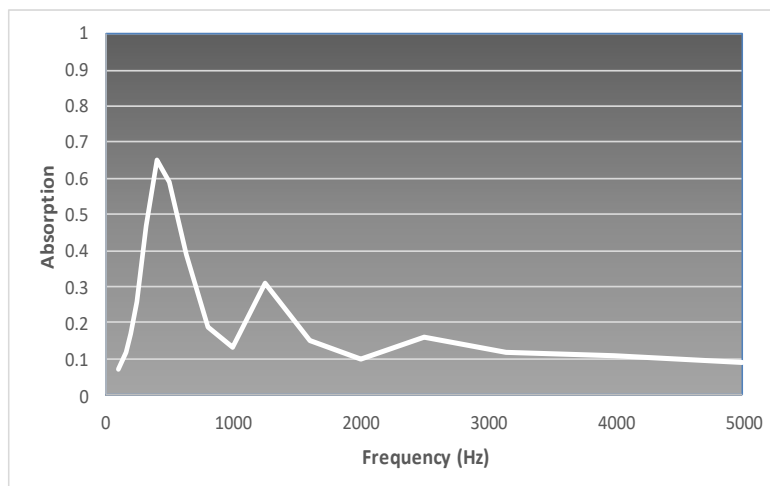
SUN CONTROL PROPERTIES															
	THERMAL FACTORS						OPTICAL FACTORS								
	Fabric		Fabric+Glazing												
	% T _s	% R _s	G _{TOT} internal Glazing C		G _{TOT} internal Glazing D		% T _v	% R _v	% t _{au,n-n}	% t _{au,n-diff}	% T _u v	Glare Control	Night Privacy	Visual Contact	Daylight Utilisation
Colour			G _{TOT}	Class	G _{TOT}	Class						Class	Class	Class	Class
Avenida Gray	0	69	0.38	1	0.26	2	0	78	0	0	0	4	4	0	0
Calle Gray	0	69	0.38	1	0.26	2	0	78	0	0	0	4	4	0	0
Ebony	0	69	0.38	1	0.26	2	0	78	0	0	0	4	4	0	0
Kaina Blue	0	69	0.38	1	0.26	2	0	78	0	0	0	4	4	0	0
Linen	0	69	0.38	1	0.26	2	0	78	0	0	0	4	4	0	0
Marina Gray	0	69	0.38	1	0.26	2	0	78	0	0	0	4	4	0	0
Pebble	0	69	0.38	1	0.26	2	0	78	0	0	0	4	4	0	0
Plaza gray	0	69	0.38	1	0.26	2	0	78	0	0	0	4	4	0	0
Rambla Gray	0	69	0.38	1	0.26	2	0	78	0	0	0	4	4	0	0
Snow	0	69	0.38	1	0.26	2	0	78	0	0	0	4	4	0	0








Data measured according to EN 410:2011 and EN 14500:2021
Calculations of g_u are according to EN 52022-1
Classification of thermal and visual characteristics according to EN 14501:2021
Data of g_u are given using standard Glazing C and D.

	Standard	
Acoustic Absorption	UNE EN ISO 10534:2 Measured with 150 mm air chamber	$\alpha_w = 0.20$ (LM)* NRC = 0.29**

* Calculated according to EN ISO 11654

** Calculated according to ASTM C-423.



Handling and storage	<ul style="list-style-type: none"> • Always store rolls horizontally • Rolls must be moved inside its external tube, or handled by two people, situated at 50 cm from each end • Rolls must be stored totally flat. The extremes must not lay on edges • Do not store rolls of Imagine on top of another • It is recommended to roll and unroll the fabric by two people
Manufacturing properties	<ul style="list-style-type: none"> • Cold-cut, crush-cut or ultrasonic • Blinds wider than 260 cm up to 290 cm can be manufactured by using a 60 mm diameter iron tube and 20 mm bottom bar • Welding agent not necessary • It is recommended to keep a gap of 15 cm between the glazing and the blind. • Avoid using components or inappropriate packing of the manufactured blind that may cause marks on the fabric • Manufacturing direction: Blinds can be manufactured 'drop to length' or railroaded. BUT do not place blinds manufactured in different directions in the same area, as this difference will be spotted • Manufacture panel blinds only 'drop to length' <div style="text-align: right;">   </div> <div style="text-align: center;">  </div>
Maintenance	<ul style="list-style-type: none"> • Vacuum clean for regular maintenance • Do not wash • Do not rub • Do not steam • Do not dry clean <div style="text-align: right;">     </div>

All specifications are based on average values and may deviate. The values are given for guidance and are not contractual.

vertisol

VERTISOL INT'L SRL
C-17, KM 18.92
08403 Granollers
SPAIN
T: + 34 93 840 1444
www.vertisol.com



ISO 9001:2015 and
ISO 14001:2015
certified company